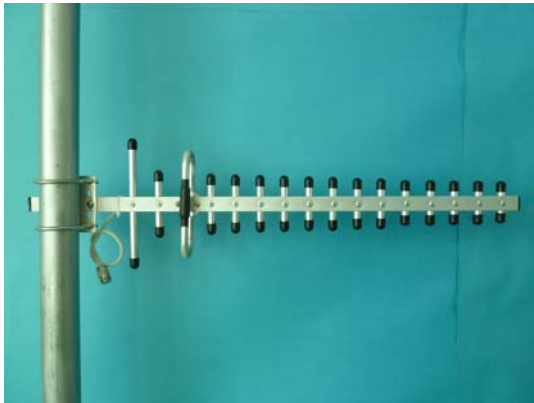




JIASHAN JINCHANG ELECTRON CO.,LTD

Directional Yagi Antenna

JCY-900/1800-12



Features:

- High Gain
- Aluminum Alloy frame
- Full day for working
- Optimized dimension
- Optional installation H or V

Application:

- GSM1800/PHS System
- Repeater station system
- Long distance telecommunication

Model NO	JCY-900/1800-12
Electric Specification	
Frequency rang-MHz	824~960/1710~1880
Bandwidth -MHz	136/170
Gain -dBi	12/12
element	16
beam width -°	H: 36 V: 32
-dB	≥16
VSWR	≤2
Input Impedance-Ω	50
Polarization	Horizontal or Vertical
Max power -W	100
Lightning protection	DC ground
Connector model	N female or others
Mechanical Specification	
Size -mm	800*180*54
Cable length-m	1
Antenna weight-kg	0.43
Working Temperature -° c	-40~60
Rated Wind Velocity-m/s	60
Clamp	U type
Pole diameter -mm	Φ40~Φ50