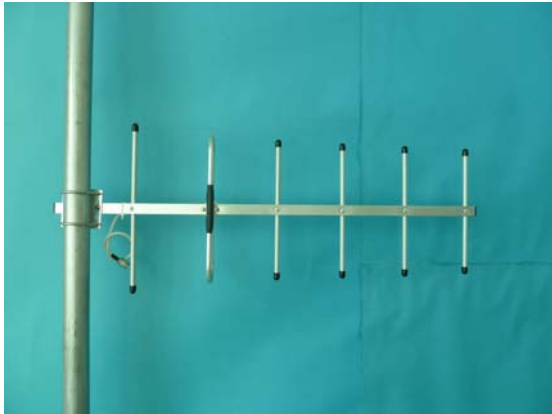




JIASHAN JINCHANG ELECTRON CO.,LTD

## Directional Yagi Antenna

JCY-433-12



### Features:

- High Gain
- Aluminum Alloy frame
- Full day for working
- Optimized dimension
- Optional installation H or V

### Application:

- 433MHZ System
- 433MHZ Wireless Access system

Model NO	JCY-433-12
Electric Specification	
Frequency rang-MHz	433±10
Bandwidth -MHz	20
Gain-DBi	12
element	6
beam width -°	H: 42 V: 38
-dB	≥16
VSWR	≤1.5
Input Impedance-Ω	50
Polarization	Horizontal or Vertical
Max power -W	100
Lightning protection	DC ground
Connector model	N female or others
Mechanical Specification	
Size -mm	770*350*80
Cable length-m	0.3
Antenna weight-kg	0.55
Working Temperature -° c	-40~60
Rated Wind Velocity-m/s	60
Clamp	U type
Pole diameter -mm	Φ40~Φ50

Add: JiaShan Highway 1897# Jiashan, Zhejiang, China

<http://www.jinchangGPS.com>

Tel: +86 573-84669686 83958636 Fax: +86 573-84669586 83958635

PC: 314100

E-Mail: [jcgps@vip.163.com](mailto:jcgps@vip.163.com)